

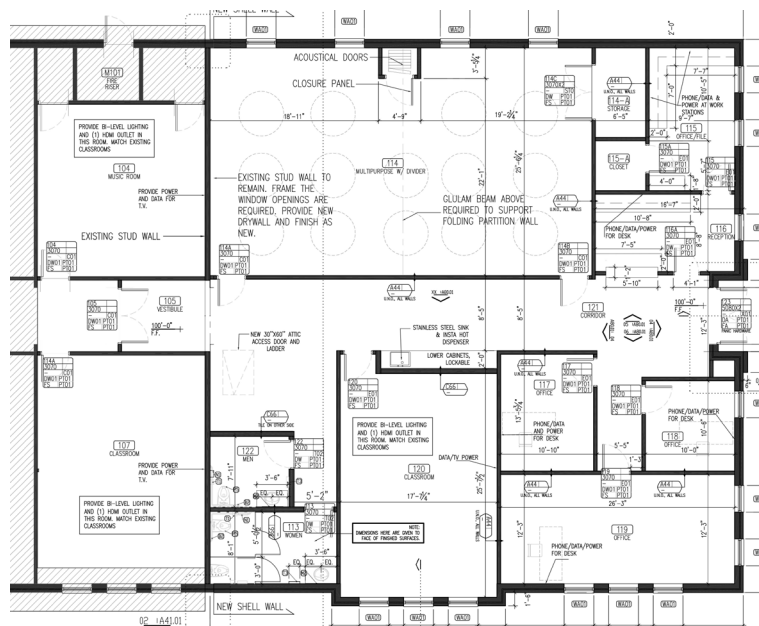
multiplying our faith

Campaign Collect

Almighty God, generous Father, who can multiply our gifts beyond what we can imagine: Bless us as we seek to multiply your name in our hearts and in our community, that we may have the bracing courage and wide generosity to give of our blessings so that you may nourish your people, redeemed by the love and sacrifice of your son, Jesus Christ our Lord, who lives and reigns with you and the Holy Spirit, one God, for ever and ever. Amen.

Pray

Lord, what do you want to do through St. Andrew's? What do you want to do through me?



multiplying our giving

Projected Cost of Expansion

Design & Engineering \$25,000
Building Construction \$730,000
Playground \$70,000
Total \$825,000

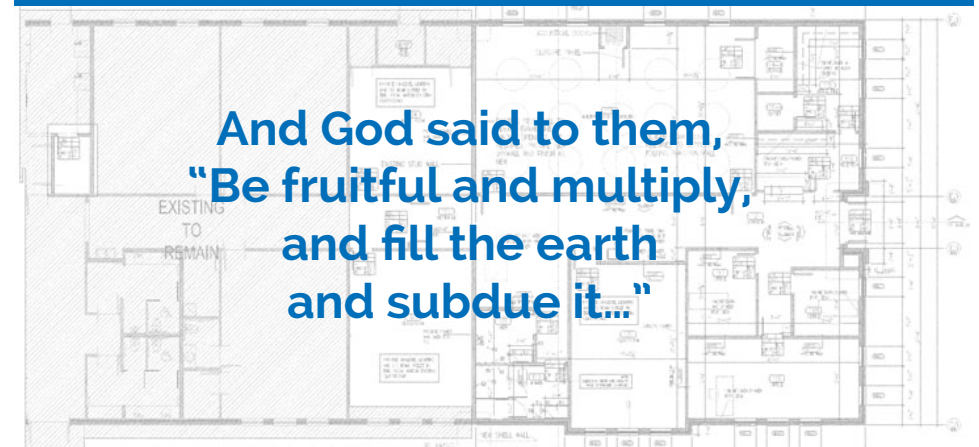
Multiply Campaign

Total Pledge Goal ~ \$650,000, thanks to previously-raised capital funds earmarked for building expansion

Annual Giving

Pledges to the Multiply Campaign are separate from those made through the annual stewardship drive, which funds regular operations of the church including staff, ministries and other expenses. St. Andrew's depends on your generosity to the annual campaign to fund our ongoing activities and programs. Your continued support will allow the church to realize the many opportunities made possible through this expansion.

Offering our gifts to Jesus allows him to multiply them in ways that we can't even imagine. Let's let the Lord take what we give and see what multiplying miracles he can do!



And God said to them,
"Be fruitful and multiply,
and fill the earth
and subdue it..."

multiplying our space

- 3,690-square-foot addition will multiply available classroom space by 3.5 times
- A large multipurpose space will enable large groups to meet without resetting the Great Hall
- Enables adult classes and programs in large room at the same time as youth and children's programming
- Music and youth ministries will have spaces of their own
- A playground will bring children and families together for fun and fellowship

multiplying our impact

- 70-80 percent of members are only at St. Andrew's on Sunday mornings
- Sunday morning ministry will include study and discipleship for all ages
 - More opportunity to nurture faith and build greater community on campus between services
 - New pantry and storage room will allow outreach ministry to grow

